

EQUITY SQUARE

140 N. PHILLIPS AVENUE / SIOUX FALLS SD, 57104



PROPERTY FEATURES

- 56,000-square-foot, four-story building
- Office/retail space available
- Newly renovated space available to be customized
- Located in the heart of downtown Sioux Falls
- Incredible views of the Big Sioux River and downtown Sioux Falls

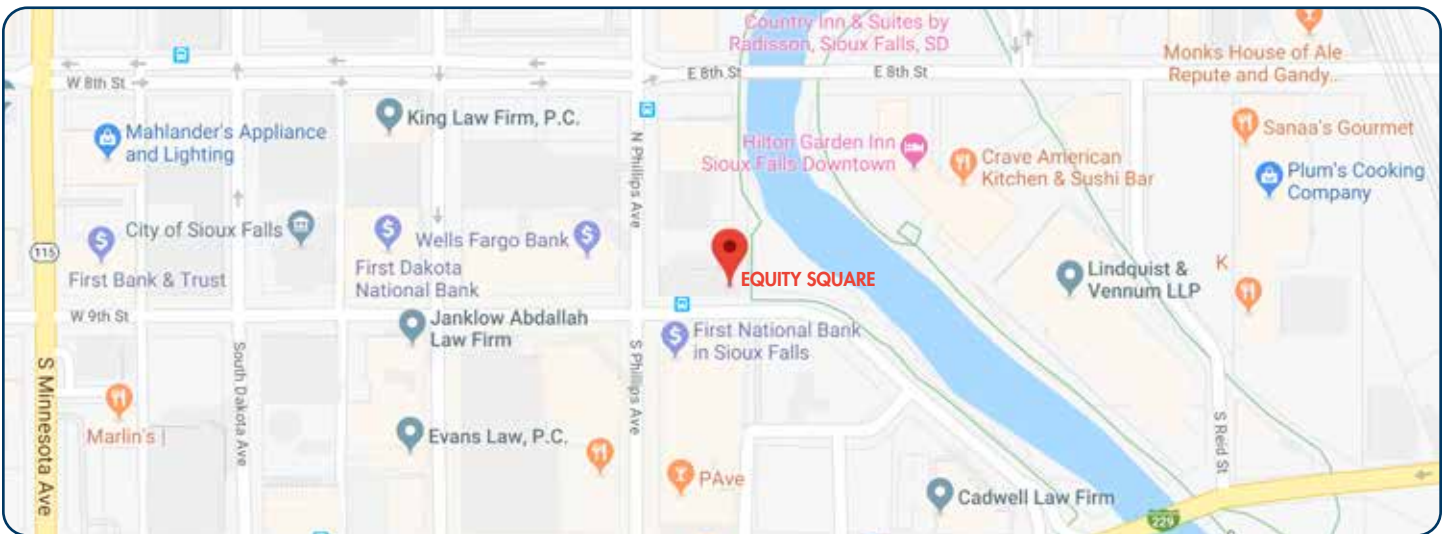
PRICING

- For lease
 - \$15.00 - \$20.00 / Square Foot
 - \$5.50 NNN rent on average

For More Information, Please Contact:

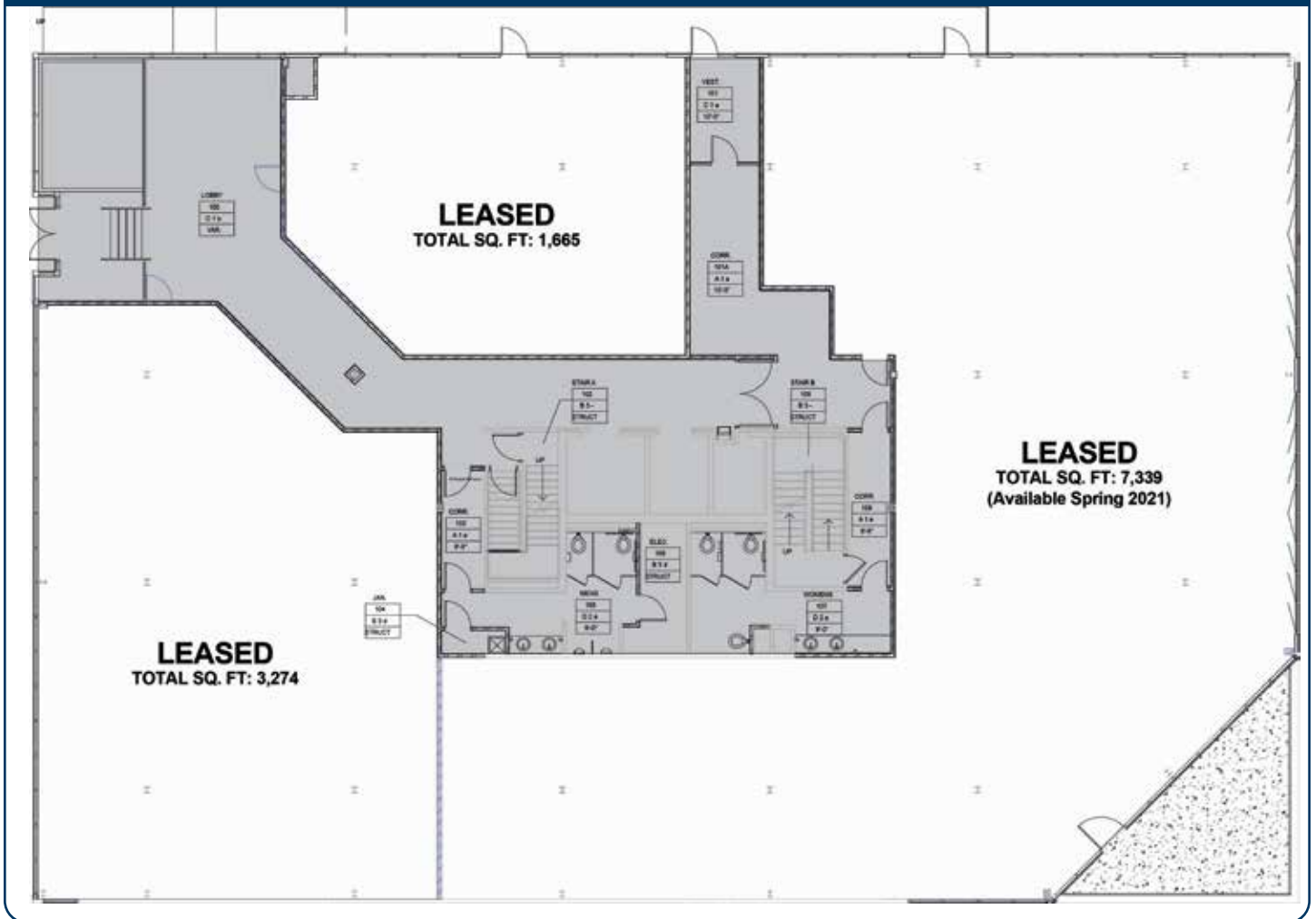
Brianna McLaughlin
605-444-0407

bmclaughlin@legacy-developments.com





FIRST FLOOR SPACE





THIRD FLOOR SPACE

